

Kewilpa

A wildlife paradise, deep in the heart of the largest expanse of riverine forest on the North Coast of NSW

nature
conservation
trust

OF NEW SOUTH WALES



Kewilpa is an 800ha property in North East NSW near Casino and Grafton. Casino is 30km away and the coastal community of Evans Head just a 30 minute drive to the south east.

The property has extremely high biodiversity values comprising a mix of floodplain Eucalypt forest, riparian rainforest and freshwater wetlands.

A complex of wetlands, forest, waterways, rainforest and coastal cypress provide protection for a number of poorly reserved and underrepresented forest ecosystems which contain examples of four endangered ecological communities.

The property contains large fresh water lagoons, interconnected wetland complexes and billabongs, has creek frontages.

Kewilpa is home to 11 threatened animal species, including the protected north coast Emu population.

The freshwater wetlands abound with birds and frogs, with 17 frog and 50 bird species recorded so far.

Make your life at *Kewilpa* and become one of the many landholders who are preserving Australia's natural heritage on private land.



UNDER CONTRACT

For further information contact:

Adam Dawson
Property Sales Manager
(02) 6626 0303
0448 801 391
adam@nct.org.au
www.nct.org.au



Kewilpa

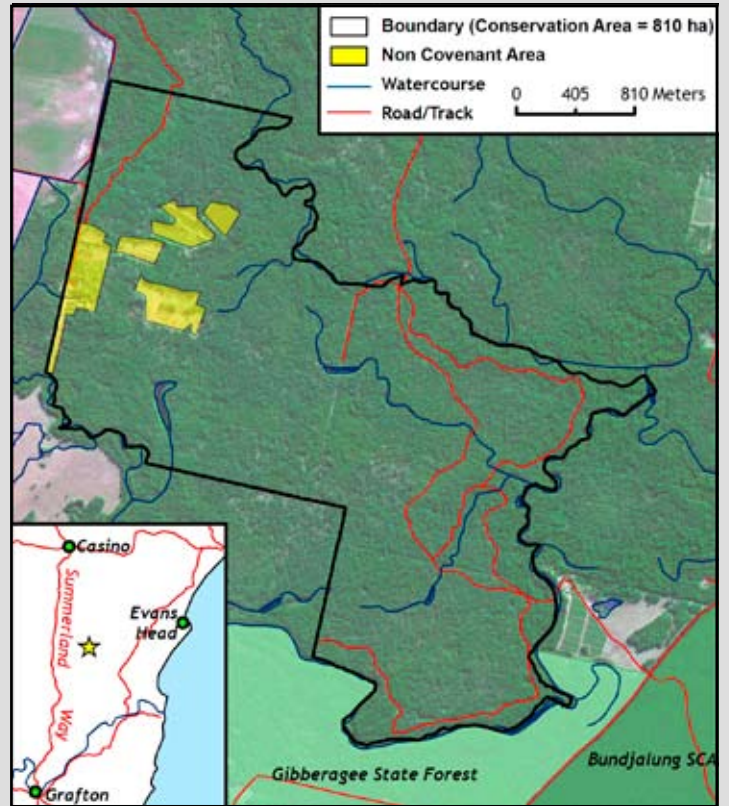


Casino has a population of 10,000 and Grafton a population of 17,000. Both are well serviced with education, health and travel services.

Abundant water from permanent creeks and lagoons including an irrigation license. Rainfall of 1000mm per annum.

The bungalow style house comprises of 4 bedrooms plus ensuite and a veranda on the eastern side of the house. *Kewilpa* has mains power and telephone connected.

The property includes large machinery and storage sheds. Approximately 38ha has been cleared to cultivation and utilised for tea-tree oil and flower production.



As the new owner, you will protect this property's conservation values in perpetuity by signing a conservation covenant and managing the land in accordance with a detailed plan of management specific to this property.

As part of its ongoing stewardship program, the Nature Conservation Trust will support and empower you into the future by offering free advice and guidance, backed up by on-site visits.



Photo Credits: All photos taken by the Nature Conservation Trust.

nature
conservation
trust

OF NEW SOUTH WALES



Protecting special places

Please help to protect special places and endangered species in New South Wales *forever*.

Make a donation today!

Visit www.nct.org.au or call (02) 6365 7543