

# Euroka

A recognised stronghold for threatened woodland birds.

nature  
conservation  
trust

OF NEW SOUTH WALES



*Euroka* forms part of a key wildlife corridor that traverses through the renowned Gwydir catchment. The property enjoys spectacular views of the summit of Mt Edgeroi through to the open grazing lands to the west. The woodland slopes act as an integral refuge for the rare and vulnerable Turquoise Parrett, Diamond Firetail, Barking Owl and many other special fauna species known to inhabit the diverse open forests, woodlands, granite tors and riparian environments of the spectacular Nandewar Ranges.

The property of *Euroka* is located within the north western slopes of NSW, 15km from Copeton Dam, 35km from Bingara and approximately 50km south of the historic regional centre of Inverell.

Elevated grassy outposts, with old growth Kurrajong trees, all accessible by formed tracks, offer vast panoramic viewing areas in all directions.

*Euroka* boasts a conservation area of approximately 1000ha with open forests and woodlands dominated by exposed granite tors grappled by inspiring fig trees. Porcupine Creek, Tea Tree Swamp and Bottlebrush Creek traverse *Euroka* after escaping the wild forms of the landscape and flow through the property to find their way to the Gwydir River. The property's conservation area contains extensive native vegetation primarily consisting of Cypress Pine and Ironbark species, with small pockets of Grey-Box Woodlands, Tumbledown Red Gum and Red Stringybark, providing shelter for a number of threatened and vulnerable native animals.



**FOR SALE**  
**\$250,000**

**For further information contact:**

Adam Dawson  
Property Sales Manager  
(02) 6626 0303  
0448 801 391  
adam@nct.org.au  
www.nct.org.au

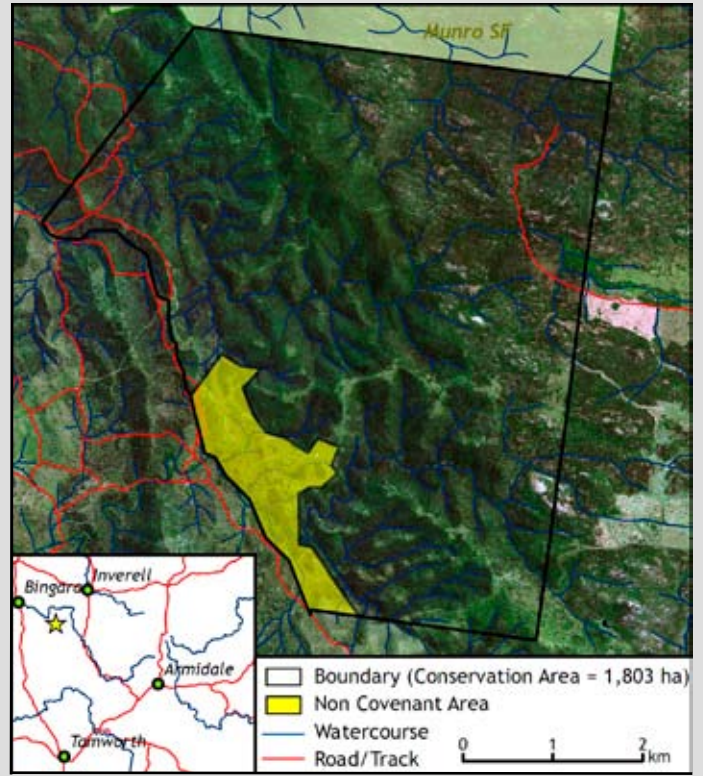


# Euroka



*Euroka* also appreciates an agricultural area of approximately 100ha which is divided into several paddocks and enjoys a steel constructed shearing shed, working sheep and cattle yards with 2WD access from the Bingara road.

Surround yourself in the unique beauty of this amazing conservation property and become one of the many landholders who are preserving Australia's natural heritage on private land.



As the new owner, you can immediately protect this property's conservation values in perpetuity by signing a conservation agreement and managing the land with the help of a plan of management. In addition to this major achievement, you have the opportunity to personally enjoy the fruits of a rural lifestyle in a spectacular northern NSW location at an extremely affordable price.

As part of its ongoing stewardship program, the Nature Conservation Trust will support and empower you into the future by offering advice and guidance, backed up by on-site visits from experienced natural resource managers.



Photo Credits: All photos taken by Ben Lynch.

nature  
conservation  
trust

OF NEW SOUTH WALES



## Protecting special places

Please help to protect special places and endangered species in New South Wales *forever*.

Make a donation today!

Visit [www.nct.org.au](http://www.nct.org.au) or call (02) 6365 7543