

# Hartwood Station

Ecologically endangered communities and  
a significant cultural heritage amid  
an agricultural landscape

nature  
conservation  
trust

OF NEW SOUTH WALES

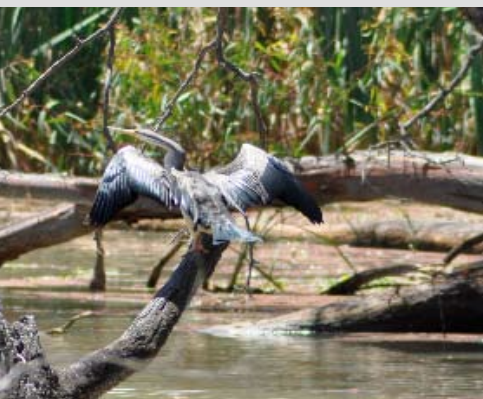


This 6768ha Riverina property is located 40km north-east of Deniliquin and 15km from the community of Conargo, boasting single and double frontages onto the permanent Yanco and Billabongs Creeks.

Established in the mid 1800s, *Hartwood Station* exudes with natural and cultural heritage. The property contains a number of ecologically endangered communities, including Inland Grey Box Woodland, Myall Woodland, Black Box Woodland and River Red Gum Woodland, as well as numerous threatened fauna species such as the Plains Wanderer, Fat Tailed Dunnart and the Superb Parrot. Exciting discoveries of vulnerable and threatened species are being added to the list of communities present on *Hartwood* with every ecological survey conducted.

*Hartwood Station* abounds with colonial heritage. The historic homestead of 11 bedrooms has been built to enclose a beautiful grassed courtyard, gardens modelled on a botanic theme, a manager's residence again encompassing a grassy courtyard, workman cottages, historically significant stables, tack room, golf course, air strip, tennis court and pool represent the magnificence and grandeur of this Riverina time capsule.

'Curraunganung' is the name local indigenous people associate with *Hartwood Station*. The properties indigenous cultural heritage is visibly apparent with artefacts, large middens and prominent scar trees prevalent across the entire landscape especially within the riparian areas.



**FOR SALE**  
Offers over \$4 million

**For further information contact:**

Adam Dawson  
Property Sales Manager  
(02) 6626 0303  
0448 801 391  
adam@nct.org.au  
www.nct.org.au



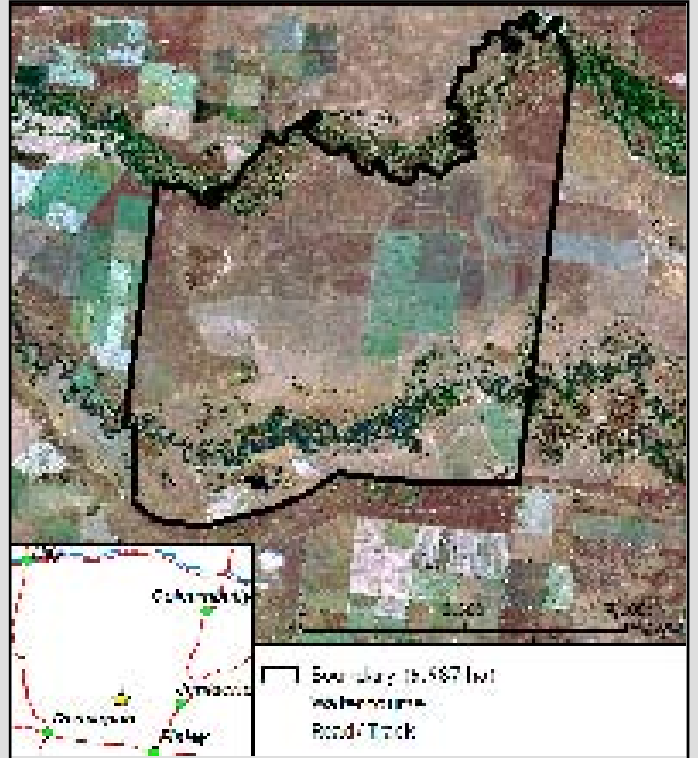
# Hartwood Station



This landscape was forever rewarding it's Indigenous inhabitants and now, with ever increasing awareness and appreciation of natural and cultural heritage, a large area of this landscape can be held in a protected state forever to be appreciated by future generations.

*Hartwood Station* also presents versatility in agricultural practices, with over 3237ha laid out to irrigation and high quality drought tolerant pastures available for livestock breeding, fattening and backgrounding programs. Extensive infrastructure, including a 16 stand historic woolshed, yards and shearer's quarters, cattle yards, workshop, grain and machinery sheds and stables, support any farming enterprise undertaken.

*Hartwood Station* presents a unique opportunity for a buyer interested in achieving high conservation outcomes and agricultural viability to become one of the many landholders who are preserving Australia's natural heritage on private land.



As the new owner, you will protect this property's conservation values in perpetuity by signing a conservation agreement and managing the land in accordance with a plan of management specific to this property.

As part of its ongoing stewardship program, the Nature Conservation Trust will support and empower you into the future by offering free advice and guidance, backed up by on-site visits from experienced natural resource managers.



Photo Credits: All photos taken by Claire Parks

nature  
conservation  
trust

OF NEW SOUTH WALES



## Protecting special places

Please help to protect special places and endangered species in New South Wales *forever*.

Make a donation today!

Visit [www.nct.org.au](http://www.nct.org.au) or call (02) 6365 7543