

# Estuary Creek

A significant wildlife and climate change corridor in the lower Richmond Range

nature  
conservation  
trust

OF NEW SOUTH WALES



*Estuary Creek* is a spectacularly diverse forested landscape. The 1608 ha property is situated in the hinterland of north coast of NSW, 45 km north of the town of Grafton and 15 km from the beautiful Clarence River village of Lawrence.

The property features a landscape of sandstone outcrops surrounded by mature Blackbutt eucalypts, rich and diverse heath lands, melaleuca wetlands, and spotted gum forests, through to running creeks with rainforest groundcovers, ferns and epiphytes.

*Estuary Creek* provides a link between two national park reserves and makes a substantial contribution to the corridor that links the coast to the McPherson Ranges.

Comprising of eight lots, the property offers the opportunity to create your own north coast eco community. The diverse and dynamic lots provide habitat for an array of plant and animal species, including the threatened Squirrel Glider and the Rufous Bettong.

With an extensive system of maintained tracks, *Estuary Creek* is a paradise for the bush walker, mountain bike rider, bird watcher or photographer. Or you can just enjoy the simple pleasures of your own north coast hinterland private reserve only minutes from the banks of the mighty Clarence River.



**FOR SALE**  
Offers invited

**For further information contact:**

Adam Dawson  
Property Sales Manager  
(02) 6626 0303  
0448 801 391  
adam@nct.org.au  
www.nct.org.au



# Estuary Creek

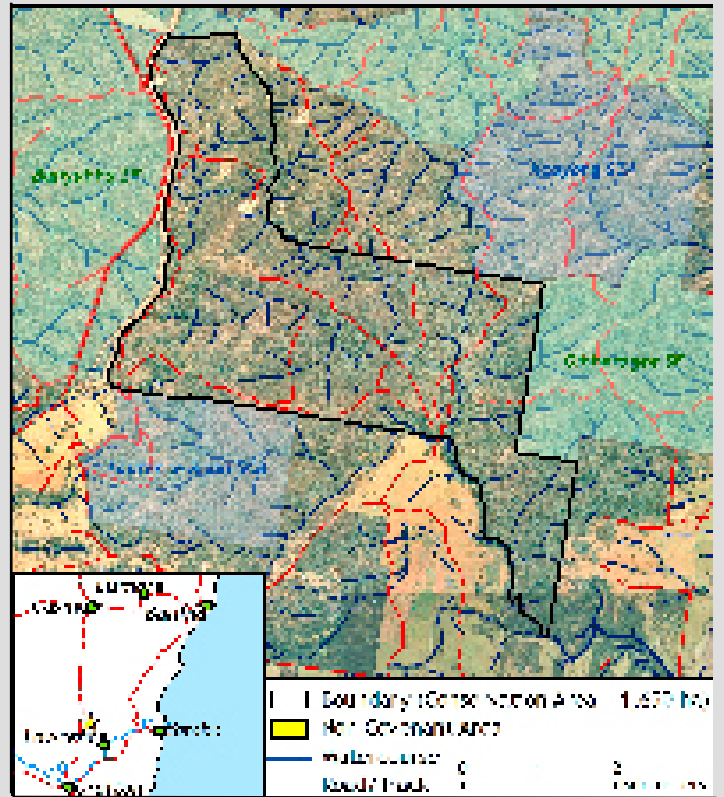


Rarely does a property of this size, so close to the popular north coast towns of Yamba and Illuka, become available for purchase.

The property offers private and peaceful house sites set amongst regenerating and old growth forests.

*Estuary Creek* is traversed by McMillan and Broadwater Creeks with other small seasonal creeks also running through the property.

As the new owner, you will protect this property's conservation values in perpetuity by signing a conservation agreement and managing the land in accordance with a detailed plan of management specific to this property.



As part of its ongoing stewardship program, the Nature Conservation Trust will support and empower you into the future by offering free advice and guidance, backed up by on-site visits from experienced natural resource managers.



Photo Credits: All photos taken by the Nature Conservation Trust.

nature  
conservation  
trust

OF NEW SOUTH WALES



## Protecting special places

Please help to protect special places and endangered species in New South Wales *forever*.

Make a donation today!

Visit [www.nct.org.au](http://www.nct.org.au) or call (02) 6365 7543