

Carwell Station

Extensive native grasslands
with pockets of diverse woodland habitat

nature
conservation
trust

OF NEW SOUTH WALES



Carwell Station is home to the threatened Grey-crowned Babbler and contains habitat for a potential 40 threatened species, including the Painted Honeyeater and Bush Stone-curlew. Over 70% of the property remains native grasslands. In addition, the property's indigenous heritage is still prevalent, with numerous artefacts and a scar tree recorded.

Carwell Station is an 8071 ha grazing property located 65 km north of Warren. The property has traditionally been utilised for the production of wool, sheep meat, beef and cereal crops and comprises level, heavy grey self mulching Myall soils with small areas of red loam Rosewood soils.

Although historically managed as a mixed farming property, *Carwell Station* has retained its conservation values. The property contains two ecologically endangered communities - Weeping Myall Open Woodland and Coolibah-Black Box Woodland. Both communities are a part of the Darling Riverine Plains Bioregion, which is the most under-represented bioregion in the State's public reserve system.

The original timber cottage stands as testament to a by-gone era alongside today's impressive homestead. Extensive accommodation facilities include a large air-conditioned three bedroom brick homestead along with two bedroom brick guest quarters and tennis court. The property also includes a manager's residence, jackaroos' quarters, 13 room shearers' quarters and kitchen, and other outbuildings. It also accommodates an aircraft landing strip.



FOR SALE
Offers invited

For further information contact:

Adam Dawson
Property Sales Manager
(02) 6626 0303
0448 801 391
adam@nct.org.au
www.nct.org.au

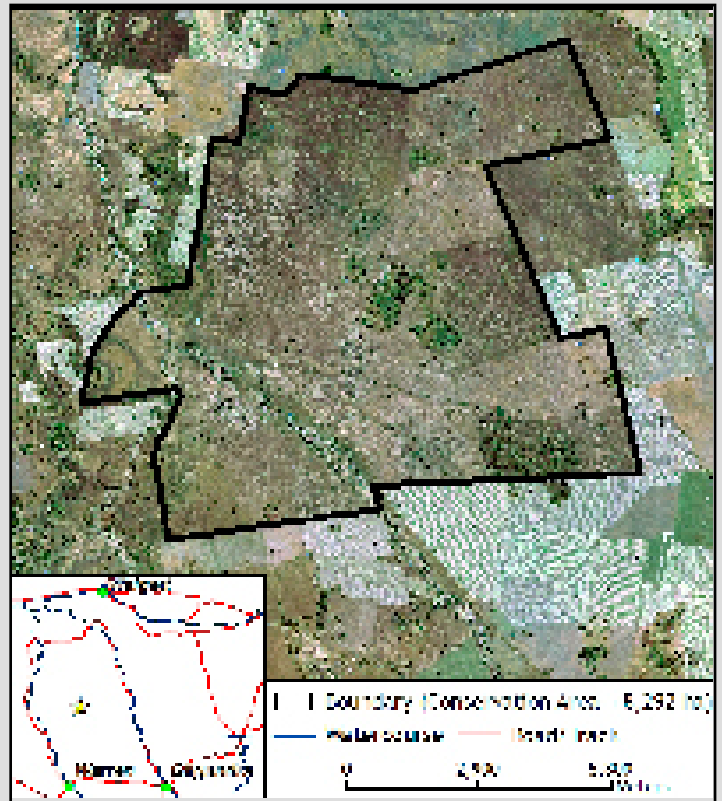
Carwell Station



Additional infrastructure includes a 10 stand electric shearing shed with excellent sheep handling facilities attached, large steel machinery sheds and other outbuildings, and nine 45 tonne and one 120 tonne grain silos. Fencing of the 20 paddocks on the property is of a good standard.

Carwell Station is exceptionally well watered for stock and domestic purposes with frontages to the Merri Merri and Back Creeks. Water on the property is also provided by four bores, bore drains and ground tanks and is piped to 14 concrete troughs with steel guards on concrete slabs.

Considerable conservation outcomes will be achieved in conjunction with sustainable, viable agricultural pursuits through strategic grazing of native pastures, direct drilling cereals into existing native and introduced pastures, controlled traffic farming and conservative stocking rates.



As the new owner, you will protect this property's conservation values in perpetuity by signing a conservation agreement and managing the land in accordance with a detailed plan of management specific to the property.

As part of its ongoing stewardship program, the Nature Conservation Trust will support and empower you into the future by offering free advice and guidance, backed up by on-site visits from experienced natural resource managers.



Photo Credits: All photos taken by the Nature Conservation Trust.

nature
conservation
trust

OF NEW SOUTH WALES



Protecting special places

Please help to protect special places and endangered species in New South Wales *forever*.

Make a donation today!

Visit www.nct.org.au or call (02) 6365 7543